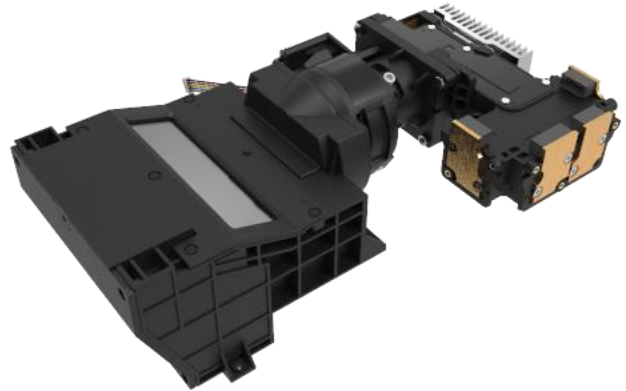


## HY33HC\_MFC Engine



显示芯片: <b>Panel:</b>	TI 0.23" 1080p DMD
分辨率: <b>Resolution:</b>	1920×1080 XPR
光源: <b>Light source:</b>	LED
投影光通量: <b>ANSI Lumens:</b>	400 lm@32W
偏轴: <b>Offset:</b>	140%
投射比: <b>Throw ratio:</b>	0.22
画幅尺寸: <b>Image size:</b>	27"~35"
对比度(FOFO): <b>Contrast ratio(FOFO):</b>	400:1
TV 畸变: <b>TV distortion:</b>	1%
色域(NTSC 1953): <b>Color Gamut(NTSC 1953):</b>	85%
尺寸(mm): <b>Dimension(mm):</b>	166.7×115×62.6